



RAINMAX R1

RAINMAX H₂O

RAINMAX N/D

Irrigation Solutions

OTR's vast product lineup for irrigation equipment is the result of many years of experience. Our unique, innovative and hands-on approach ensures OTR products will get the job done, while providing your customers with excellent value.



RAINMAX H₂O

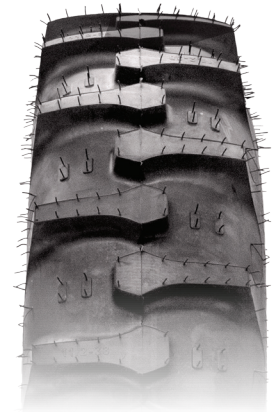


- RAINMAX H₂O is an OEM-approved R1 tire for irrigation equipment using center-pivot style wheels.
- It offers enhanced protection from environmental stresses that cause premature aging and failure.
- The lug design maximizes traction on wet and muddy ground with a self-cleaning feature, making this an excellent all-around tire solution for irrigation.



Max UV Protection
Heavy-duty construction, tread pattern, and premium UV-resistant compounds ensure long life.

RAINMAX N/D



NON-DIRECTIONAL

The Rainmax N/D, non-directional, tread pattern maximizes traction rotating in either direction of the irrigation system.



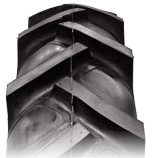
RAINMAX H₂O



RAINMAX N/D



RAINMAX R1



Tire Size	Ply	Rated Pressure	Overall Diameter	Section Width	Rim Size	Load Capacity	Part Number
		PSI	IN	IN	IN	LBS@MPH	
RAINMAX H2O							
NEW 11-22.5	10	45	42.52	11.02	22.5X8.25	5060@10	T2151011225
NEW 11.2-24	6	26	43.97	11.38	24X10	3000@10	T2150611224
11-24.5	10	45	44.45	10.83	24.5X8.25	5060@10	T2151011245
11.2-38	6	26	57.51	11.49	38X10	2540@25	T2150611238
14.9-24	6	20	50.04	14.65	24X12	3000@25	T2150614924
RAINMAX N/D							
11.2-24	6	26	43.54	10.94	24X10	3000@10	T11224015
11.2-38	6	26	58.27	11.65	38X10	2600@25	T11238011
14.9-24	6	20	49.41	14.68	24X13	3000@25	T14924018
R1							
11.2-38	6	26	58.66	11.81	38 X 10	2600@25	T690611238
14.9-24	6	26	51.22	14.96	24 X 12	3420@CREEP	T690614924

Irrigation Tire & Wheel

PIVOT WHEELS

Choose **the best solution** for irrigation equipment including center-pivot and linear systems!

OTR offers a range of steel pivot wheels for irrigation equipment in popular sizes, including 8- and 9-hole patterns, and common offsets. Reverse mount units are also available. Standard units are galvanized for corrosion protection.



OTR WHEEL PROGRAM

In the middle of the busy season, our tire assemblies allow quick and easy installation.
PURCHASING TIRE & WHEEL ASSEMBLIES MADE EASY!

→ Universal fit wheels

→ Popular sizes in stock

→ Custom, made-to-order assemblies

→ USA made wheels 24 X 8",
24 X 10", 22.5 X 8.25",
and 24.5 X 8.25"

100% BUTYL RUBBER PREMIUM TUBES

OTR's Trans American Rubber tubes feature 100% butyl rubber for a premium tube solution. Tubes extend tire life, prevent air leakage, and add weight for improved traction. Butyl provides the following distinct advantages for agricultural equipment:

→ **Excellent Weatherability:**
resistance to heat, moisture
and chemical attack.

→ **Durability:** resistant to
abrasion and tearing.



Description

11.2-38/6PR RAINMAX R1 ON 38 X 10-8 DOUBLE DISC

14.9-24/6PR RAINMAX R1 ON 24 X 10-8 ZERO OFFSET

14.9-24/6PR RAINMAX R1 ON 24 X 10-8 -2.00 OFFSET

14.9-24/6PR RAINMAX R1 ON 24 X 12-8 -2.00 OFFSET

**CONTAINER DIRECT
SAVINGS ON MOUNTED
TUBELESS ASSEMBLIES**



OTR Engineered Solutions

OTR Engineered Solutions (OTR) is a market-leading global enterprise specializing in off-the-road terrain engaging solutions for original equipment manufacturers (OEMs) and aftermarkets. OTR also provides value-added services such as warehousing, tire mounting, and sequencing. Core markets include Construction, Lawn & Garden, Powersports, Agriculture, Forestry, Mining, Material Handling, and Specialty Vehicles.

+1.800.833.6309

www.otrwheel.com



OTR is the operating unit of OTR International, Inc., comprising businesses located in the U.S., Canada, Europe, China, Thailand and Sri Lanka. OTR is a partner company of Owner Resource Group (ORG), LLC.