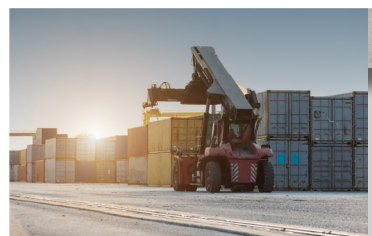


MATERIAL HANDLING



OTR WHEEL ENGINEERING, INC. (OTR) is your global partner for high-quality, engineered, off-the-road tires, wheels, assemblies and accessories. Thank you for choosing OTR as a resource to help find the right solution for your vehicle or machine. We are proud to supply well-known original equipment manufacturers and aftermarket customers in the Material Handling market, garnering a reputation as a solutions provider, using customer feedback to develop innovative products and services that solve problems and add value.

COMPANY OVERVIEW

OTR is a multinational enterprise with over 1,000 employees dedicated to supporting customers around the world. Core markets include Material Handling, Construction, Power-sports, Lawn & Garden, Industrial, Mining, Forestry, Agricultural and Specialty Vehicles.

OTR's global infrastructure comprises 38 manufacturing facilities and warehouses located in the U.S., Canada, Europe, and Asia. Our business model is based not only on developing, manufacturing and supplying market-driven products, but also services such as warehousing, tire mounting, sequencing, tire liner, foam-fill and modular assembly in facilities located near customers. We also support a network of distribution partners servicing local markets with one-stop-shopping for OTR products.

MATERIAL HANDLING

OTR's product line-up for material handling vehicles is the result of many years of experience, innovations and a hands-on approach that ensures our products get the job done. Whether you are focused on safety, vehicle productivity, utilization or value, OTR's team will help you find the right solution.



TABLE OF CONTENTS

TIRES

GSE5
 IND-55
 MUDSHARK HF36
 MUDSHARK R46
 R4-HD6
 SAND MASTER7
 SANDSTORM7
 TRACTION MASTER HF37

TUBES

TUBES8

WHEELS

MATERIAL HANDLING9
 3 WHEEL FORK9

TIRE SHIELDS

TIRE SHIELDS10

FLAT PREVENTION

TYRLYNER®11
 FOAM-FILL AND WHEEL EXCHANGE PROGRAM11
 SOLID TIRES11

WHEEL INSPECTION & RECERTIFICATION

WHEEL INSPECTION & CERTIFICATION12

INFORMATION

CONTACT INFORMATION13
 WARRANTY INFORMATION13
 ISO CERTIFICATION13



MATERIAL HANDLING

QUICK REFERENCE GUIDE

MATERIAL HANDLING



GSE
PAGE 5



IND-5
PAGE 5



MUDSHARK HF3
PAGE 6



MUDSHARK R4
PAGE 6



R4-HD
PAGE 6



SAND MASTER
PAGE 7



SANDSTORM
PAGE 7



TRACTION MASTER HF3
PAGE 7

NOTE: TylLyner® flat-prevention coating is available for OTR tires—see p. 11
PRODUCT SPECIFICATIONS AND AVAILABILITY SUBJECT TO CHANGE WITHOUT NOTICE

GSE

MATERIAL HANDLING



GSE is a deep ribbed tire with shoulder notches that improve grip when turning on hard surfaces or soft ground. Heavy-duty construction and reinforced sidewalls ensure long life and protection from cuts and punctures.

PART #	TIRE SIZE	PR	PSI	OD	SW	RIM	LOAD
T131084008	4.00-8	8	130	16.73	4.96	8X3.75	1,480@15MPH
T131106009	6.00-9	10	125	22.1	7	9X4	2,820@5MPH@125 PSI
T1311265010	6.50-10	10	115	24	7.75	10X5	3,330@5MPH
T13108800165	8.00-16.5	8	75	28.6	8.06	16.5X6.75	3,600@5MPH@75PSI
T13110875165	8.75-16.5	10	70	30.24	9.13	16.5X6.75	3,620@5MPH

MATERIAL HANDLING

IND-5

IND-5 is an ultra-heavy-duty, non-directional tire featuring deep lugs, a reinforced sidewall, rim guard and enlarged bead for tough industrial applications. The 12LL610 HBR design eliminates hub clearance issues.



PART #	TIRE SIZE	PR	PSI	OD	SW	RIM	LOAD
T9818100020	10.00-20	18	145	43.3	11.9	20X7.5	LOAD WHEEL 13,420@15MPH; STEER WHEEL 11,300@15MPH
T9824120020HD	12.00-20	24	140	46.2	13.2	20X8	LOAD WHEEL 18145@15MPH; STEER WHEEL 15,335@15MPH
T9824120020	12.00-20	24	140	46.18	13.43	20X8	LOAD WHEEL 18145@15MPH; STEER WHEEL 15,335@15MPH
T982412LL610	12LL610	24	145	46.57	12.83	24X8.5	LOAD WHEEL 18145@15MPH; STEER WHEEL 15,335@15MPH
T981882515	8.25-15	18	140	33.7	9.35	15X6.5	LOAD WHEEL 8445@15MPH; STEER WHEEL 7135@15MPH

MATERIAL HANDLING

MUDSHARK HF3

MUDSHARK HF3 offers heavy-duty construction with deep lugs for improved traction and cleaning. It's also cut- and puncture-resistant, with a rim guard for sidewall protection. An HBR option is available, with a shortened sidewall for better handling and grip when operating on soft ground.



PART #	TIRE SIZE	PR	PSI	OD	SW	RIM	LOAD
T5103115515M	31X15.50-15	10	60	31.18	14.87	15X13	4225@10MPH
T5103115500M	31X15.50-500	10	60	31.25	14.5	19.5X14	4180@5MPH

MUDSHARK R4



MUDSHARK R4 is a rugged industrial tire featuring deep stepped lugs for better grip and cleaning. It provides a reinforced sidewall and rim guard, making it well suited for use in rough environments.

PART #	TIRE SIZE	PR	PSI	OD	SW	RIM	LOAD
T181103151300165	31.5X13.00-16.5	10	70	30.34	12.61	16.5X9.75	5370@5MPH

R4-HD

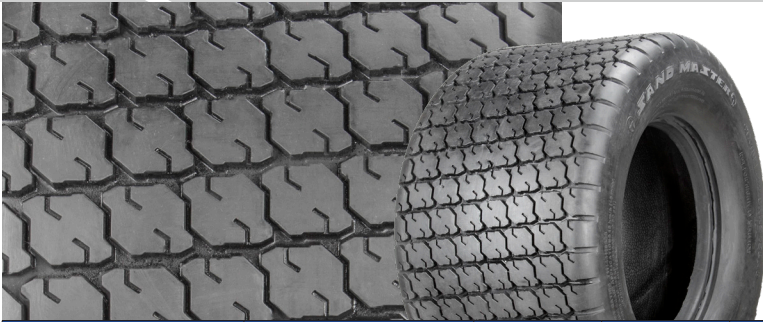
R4-HD is a durable industrial tire with deep angled lugs for stability, traction and cleaning. It's long-lasting, with reinforced sidewalls and rim guards for added protection.



PART #	TIRE SIZE	PR	PSI	OD	SW	RIM	LOAD
T1211231155015	31X15.50-15	12	60	31.24	15.06	15X13	4940@10MPH

SAND MASTER

MATERIAL HANDLING



SAND MASTER offers exceptional traction on a variety of surfaces, especially soft ground where stability is critical. Compact, grooved lugs channel water away, improving grip on wet ground—a feature especially useful in maneuvering loads outside.

PART #	TIRE SIZE	PR	PSI	OD	SW	RIM	LOAD
T11143618625	36X18LL625	14	75	36.3	17.91	625X15	14,300@5MPH
T11144118225	41X18LL.225	14	50	42.24	19.71	22.5X14	9,200@10MPH
T111250150028	50X15.00-28	12	65	49.65	15.12	28X12	13,600@5MPH
T111250180028	50X18.00-28	12	65	49.65	15.12	28X15	17,600@5MPH

MATERIAL HANDLING

SANDSTORM

SANDSTORM balances excellent wear and flotation characteristics for operating hard surfaces and off-road—the ideal combination for 3-wheel forklifts requiring long life, stability and traction.



PART #	TIRE SIZE	PR	PSI	OD	SW	RIM	LOAD
T1420831155015	31X15.50-15	8	55	30.34	15.12	15X13	3645@10MPH

TRACTION MASTER HF3



TRACTION MASTER HF3 provides a wide footprint with deep, angled, extra-long lugs that enhance traction and cleaning, especially operating off-road on soft ground. It's a heavy-duty tire designed for tough environments, balancing stability with long-life and wear characteristics.

PART #	TIRE SIZE	PR	PSI	OD	SW	RIM	LOAD
T130831155015	31X15.50-15	8	45	31.06	14.33	15X13	3645@10MPH

MATERIAL HANDLING

TUBES

OTR'S TRANS AMERICAN RUBBER BRAND TUBES feature 100% butyl rubber for a premium tube solution. Tubes extend tire life, prevent air leakage and add weight for improved traction. Butyl provides distinct advantages for material handling equipment:

- Improved shock absorption and ride comfort.
- Excellent weatherability; resistance to heat, moisture and chemical attack.
- Durability; resistant to flexing, abrasion and tearing.



PART #	DESCRIPTION	VALVE	BOX QTY
9I40NB	6.00-9	TR13	20
9I50NB	6.00/6.90R9	JS2	20
9I52NB	6.00/6.90R9	TR150A	20
9I54NB	6.00/6.90R9	TR75A	20
9I59NB	6.50/7.50R10	JS2	20
9I60NB	6.50/7.50R10	TR150A	10
9I64NB	6.50/7.50R10	TR75A	10
9I66NB	7.00R12	TR75A	10
9I67NB	9.00R10	TR75A	10
9I69NB	27X8.15/8.50R15	TR75A	10
9I71NB	27X8.15/8.50R15 OFF CENTER	TR15	10
9I75NB	28X9.00R15 CENTER	TR75A	10
9I80NB	250R15	TR75A	10
9I82NB	300R15	TR75A	10
9I86	32X12R15	TR75A	8

WHEELS

MATERIAL HANDLING



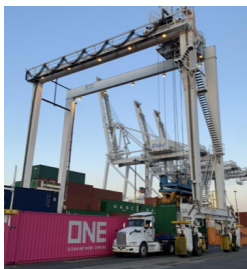
OTR OFFERS 3- AND 5-PIECE STEEL WHEELS for heavy-duty lift trucks, reach stackers, cargo handling vehicles and gantry cranes, plus single-piece units for 3-wheel lift trucks (available in 6-, 10- and 11-hole patterns). Material handling wheels are 10-BAR; FMVSS 120/SAE J179, TRA and ETRTO compliant; and rated for ultra-heavy loads, making them a preferred choice for OEMs.

MATERIAL HANDLING WHEELS

DESCRIPTION	TIRE SIZE	TYPE	SECTIONS
15X6.5	8.25X15	10-BAR	3-PC.
20X8	11.00X20	10-BAR	3-PC.
20X8	12.00X20	10-BAR	3-PC.
24X8.5	12.00X24	10-BAR	3-PC.
24X10	14.00X24	10-BAR	3-PC.
25X11.5	16.00X25	10-BAR	5-PC.
25X13	18.00X25	10-BAR	5-PC.
33X13	18.00X33	10-BAR	5-PC.
35X17	24.00X35	10-BAR	5-PC.

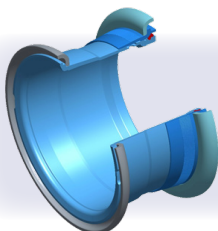
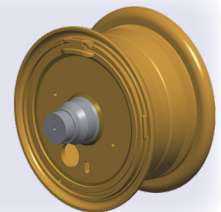
3 WHEEL FORK LIFT WHEELS

PART #	WHEEL SIZE	BOLT HOLES	TIRE SIZE	MAKE
12105054	12X10.5	10	26/12-12	MOFFETT
1510008	15X10.10	10	31/12.50-15	MOFFETT
1513010	15X13	10	31/15.50-15	MOFFETT
1513020	15X13	11	31/15.50-15	PRINCETON
15X13W010	15X13	11	31/15.50-15	PRINCETON
165975120	16.5X9.75	10	12-16.5	MOFFETT
W1510019	15X10	6	26/12D380	DONKEY LIFT



GANTRY CRANE WHEELS

OTR supplies custom wheels for gantry cranes for original equipment and aftermarket retrofits. HSLA grade steel is used for critical components to ensure strength, longevity and load-carrying capacity. Consult with your OTR sales representative for more information.



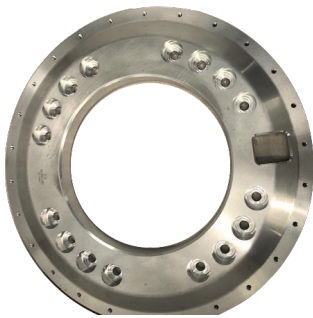
NEXT-GENERATION 10-BAR WHEELS

OTR's new 10-BAR wheels feature fully integrated universal slots for easier demounting, custom-forged seamless gutters made with HSLA grade steel, and hot-forged back-sections that enhance longevity. Welds are 100% checked using ultrasound verification, with full weld penetration for consistent quality and performance when used in severe-duty environments such as ports.

OTR TIRE SHIELDS protect valuable assets from sidewall damage caused by punctures and cuts, thus ensuring continued vehicle mobility especially on extreme terrain. This in turn reduces downtime while enhancing safety for the operator and workers at the jobsite. Constructed with a durable composite material, shields are also lightweight so there is minimal impact on overall vehicle weight and no disruption in tire balance. Easy to install, shields mount directly to hub flanges via custom lock and adapter rings, with lug nut protection. There are eight part numbers, with additional sizes coming soon.



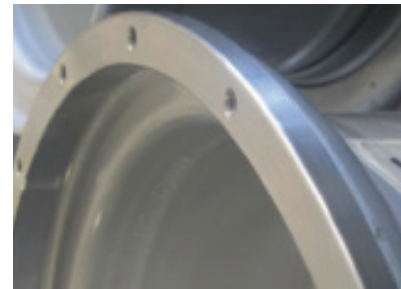
PART #	TIRE	WHEEL
TS20578160965	12.00-20	20X8
TS25702261135	14.00-25	25X11.25
TS60471-01	16.00-25	25X11.25
TS60471-01	23.5R25	25X19.5
TS25730261379	18.00-25	25X13
TS60457-01	305/85R22.5	20X10
TS604384-01	26.5R25	25X22
TS60514-01	29.5R25	25X25



Lug nut protector provides added protection.

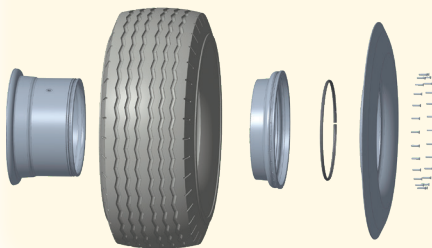


Mounts directly to the attached mounting ring



OTR Wheel Engineering can integrate the mounting ring or pattern to your wheels

REDUCE LIFE CYCLE COST



OTR tire shields reduce tire cycle costs by keeping expensive tires out of harm's way. This also reduces labor cost to replace tires. Less downtime means more productivity and machine utilization—critical success factors for fleet operations at jobsites with deadlines to meet. The assembly is easy to install and validated by OEMs in the field.

FLAT-PREVENTION SOLUTIONS

OTR provides options for flat-prevention and mitigation such as our proprietary TyrLyner® system; a foam-fill and wheel exchange program for telehandlers and other machines; and well-regarded line of solid tires sold under the OTR brand SolidBoss®. Each provides a viable solution to the inherent challenges of operating vehicles and machines off-road, on extreme terrain where there is a high potential for tire damage.



TYRLYNER® is a proprietary rubber urethane securely applied to the inside of a tire's casing to extend life and enhance safe operation. Its "self-healing" technology ensures the tire is sealed when punctured or cut by objects up to ¼" in diameter. The coating is applied at an OTR facility for original equipment manufacturers and distributors who support fleets and owner-operators engaged in construction work, where downtime is NOT an option.

FOAM-FILL AND WHEEL EXCHANGE PROGRAM

FOAM-FILL AND WHEEL EXCHANGE PROGRAM OTR's offers a foam-fill and wheel exchange program to qualified dealers who service rental companies and end users who require immediate replacements for damaged tires. Dealers stock finished assemblies for replacement parts and draw from this stock to replace tires on a real-time basis. Wheels are retrieved, inspected and recirculated as needed. Tires are filled with an OEM-approved resin at an OTR facility, using a proven process so there is no chunking or air pockets which can lead to premature failure. Additionally, OTR has launched a portal to facilitate the end customer's ordering through the dealer/service provider, to provide a user-friendly closed-loop solution.



SOLID TIRES

OTR CAN DEVELOP CUSTOM SOLID TIRES FOR SELECT MATERIAL HANDLING VEHICLES. Our brand—SOLIDBOSS®—is the preeminent brand in solid tires, preferred by OEMs and specified as original equipment for telehandlers, skid-steers and other vehicles. These tires are not only tough and long-lasting, they use apertures to absorb shock and cushion the ride for the operator, contributing to less fatigue on man and machine. Premium rubber compounds, ultra-deep and ultra-wide lugs, and reinforced sidewalls combine with solid tire construction to deliver a robust flat-prevention solution for fleets and owner-operators who cannot afford downtime. Consult with your OTR salesperson for more information.



WHEEL INSPECTION & RECERTIFICATION

OTR's after-sale support includes a proven wheel inspection and recertification process for material handling vehicles used at ports and industrial sites. This capability is enhanced by OTR's experience in developing and supplying heavy-duty wheels to OEMs, resulting in a core competency that can be leveraged for dealers and end users alike. If wheels are determined to be defective, OTR will work with the OEM, dealer or end user to specify and supply OEM-approved replacements. The process employed ensures safe demounting, with documentation for future reference. Contact your OTR salesperson to discuss how to start this process.

- Verification of wheel condition; isolates defective wheels or wheels nearing end-of-life before there is a potential danger.
- Documentation of wheel duty cycle, application, visible wear and hidden issues, using a proprietary ultrasound scoping technique to identify potential failures.
- Full report documenting findings, for traceability purposes.
- Training for customer's sales staff and end users, e.g. port maintenance personnel.



CONTACT INFORMATION

- For OEM inquiries contact your local OTR salesperson or send an email to sales@otrwheel.com.
- For aftermarket inquiries, contact your local OTR salesperson or call 800-833-6309 if you are located east of the Mississippi River or 888-455-4910 if you are located west of the Mississippi. You may also email us at sales@otrwheel.com.
- For information on Trans American Rubber tubes, flaps or accessories, contact us at 800-922-8823.

WARRANTY INFORMATION

- OTR provides limited warranty coverage for tires, wheels, tracks and other items in the event of defects in workmanship. You may request a copy of our policy by emailing us sales@otrwheel.com.
- Note that OTR has designated select dealers and distributors to assist with warranty repairs. Contact OTR for more information.

CATALOG DISCLAIMER

Product specifications and information were correct as of the date of this catalog release but are subject to change without notice or obligation. Every effort has been made to ensure the accuracy of this catalog. Consult with your salesperson if you wish to verify data is correct.

ISO 9001: 2015 CERTIFICATION

OTR facilities are ISO 9001: 2015 registered (except for new locations where certifications are in process). ISO ensures consistent product quality, standardization, documentation and compliance with OEM requirements.

REACH COMPLIANCE

OTR's custom tires for OEMs can be designed with REACH compliance. Consult with your salesperson as needed.



otrwheel.com

