

# FORESTRY



**OTR WHEEL ENGINEERING, INC. (OTR)** is your global partner for high-quality, engineered, off-the-road tires, wheels, assemblies and accessories. Thank you for choosing OTR as a resource to help find the right solution for your vehicle or machine. We are proud to supply well-known original equipment manufacturers and aftermarket customers in the Forestry market, garnering a reputation as a solutions provider, using customer feedback to develop innovative products and services that solve problems and add value.

## **COMPANY OVERVIEW**

OTR is a multinational enterprise with over 1,000 employees dedicated to supporting customers around the world. Core markets include Forestry, Mining, Construction, Powersports, Lawn & Garden, Industrial, Material Handling, Agricultural and Specialty Vehicles.

OTR's global infrastructure comprises 38 manufacturing facilities and warehouses located in the U.S., Canada, Europe, and Asia. Our business model is based not only on developing, manufacturing and supplying market-driven products, but also services such as warehousing, tire mounting, sequencing, tire liner, foam-fill and modular assembly in facilities located near customers. We also support a network of distribution partners servicing local markets with one-stop-shopping for OTR products.

## **FORESTRY**

OTR's product line-up for forestry equipment is the result of many years of experience, innovations and a hands-on approach that ensures our products get the job done. Whether you are focused on productivity, utilization, safety or value, OTR's team will help you find the right solution.





# TABLE OF CONTENTS

# FORESTRY

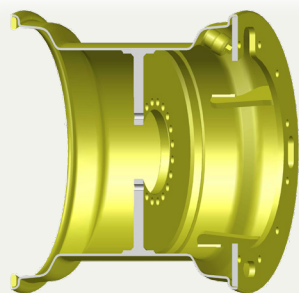
## WHEELS

INTRODUCTION .....	4
CAT/WEILER WHEELS.....	5
JOHN DEERE WHEELS .....	6
TIGERCAT WHEELS.....	7
CUSTOM PARTS .....	8
APPLICATIONS TIPS.....	9

## INFORMATION

CONTACT INFORMATION.....	10
WARRANTY INFORMATION .....	10
ISO CERTIFICATION .....	10

FORESTRY



### ENGINEERED FOR EXTREME DUTY

*"The OTR forestry wheels we sell for Tigercat and John Deere skidders and cutters, are engineered for extreme duty, providing the strength, durability and reliability our customers need. Reducing downtime due to wheel failures is also key. We also appreciate OTR's flexibility in customizing wheels for end users' applications. These are the reasons why OTR is our first choice for forestry wheels!"*

*Ryan Cockrell and Cowan Conway, Commercial Sales, Southern Tire Mart, Jackson*



## FORESTRY

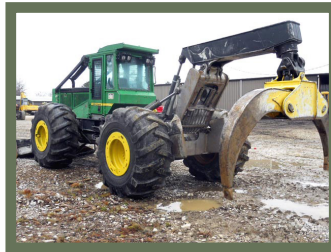
# WHEELS

### BEST-IN-CLASS FORESTRY WHEELS

OTR manufactures and supplies steel wheels for forestry machinery such as feller bunchers, skidders, loaders and forwarders for original equipment manufacturers (OEMs) and the aftermarket. Our applications-specific steel wheels are regarded as best-in-class, designed for extreme-duty and long-life with exceptional value as well. Wheels are also designed for plug & play replacements of other brands, including stock units, and can be modified for unique end user requirements.

Typical rim sizes range from 25"-32", with standard, dual disc, inside dual, outside dual and custom configurations.. Key benefits include:

- OEM compliant designs, validated in real-world use
- Center discs—flat or formed—manufactured with precise tolerances for longevity and fitment
- Beads and belly band sleeves reinforced for improved strength and load distribution
- Inside dual wheels (ISD) feature dual-ring welded to wheel, with 4 gussets on rear for strength and stability
- Assemblies welded using robotic, automatic and submerged arc machines
- Valve guards added for ALL wheels
- Tire size recommendations and mounting services available
- Data base covering critical backspacing to ensure clearance for attachments, hydraulic rams, bump guards, etc.





# WHEELS

## FORESTRY



### CAT/WEILER

FORESTRY

PART #	MAKE	TIRE SIZE	WHEEL SIZE	CONFIGURATION	BOLT PATTERN	BACKSPACE
32X27W005	CAT/WEILER	30.5X32	32 X 27	INSIDE DUAL	20	15
3227034	CAT/WEILER	30.5X32	32 X 27	INSIDE DUAL	20	16
32X27W017	CAT/WEILER	30.5X32	32 X 27	STANDARD	20	15
32X27W015	CAT/WEILER	30.5X32	32 X 27	INSIDE DUAL	24	11
3227022	CAT/WEILER	30.5X32	32 X 27	INSIDE DUAL	24	15
3227016	CAT/WEILER	30.5X32	32 X 27	STANDARD	24	11
32X31W016	CAT/WEILER	35.5 X 32	32 X 31	STANDARD	20	11
32X31W003	CAT/WEILER	35.5 X 32	32 X 31	STANDARD	20	15
32X31W017	CAT/WEILER	35.5 X 32	32 X 31	INSIDE DUAL	24	11
32X31W024	CAT/WEILER	35.5 X 32	32 X 31	INSIDE DUAL	24	15
32X31W010	CAT/WEILER	35.5 X 32	32 X 31	STANDARD	24	11
32X31W011	CAT/WEILER	35.5 X 32	32 X 31	STANDARD	24	15
32X36W008	CAT/WEILER	73X44.00-32	32 X 36	STANDARD	24	11
32X44W004	CAT/WEILER	66,68,76X5000-32	32 X 44	STANDARD	20	14



## FORESTRY

# WHEELS

## JOHN DEERE WHEELS



PART #	MAKE	TIRE SIZE	WHEEL SIZE	CONFIGURATION	BOLT PATTERN	BACKSPACE
2530090-572	JOHN DEERE	67-34.00-25	25 X 30 3P	STANDARD	14	10.7
26X25W015	JOHN DEERE	28L26	26 X 25	INSIDE DUAL	14	10
26X25W026-572	JOHN DEERE	28L26	26 X 25	STANDARD	14	8
3221009-572	JOHN DEERE	24.5X32	32 X 21	OUTSIDE DUAL	12	0
3221010	JOHN DEERE	24.5X32	32 X 21	OUTSIDE DUAL	24	0
3227026-572	JOHN DEERE	30.5X32	32 X 27	OUTSIDE DUAL	12	0
32X27W009-572	JOHN DEERE	30.5X32	32 X 27	INSIDE DUAL	14	8
3227017-572	JOHN DEERE	30.5X32	32 X 27	STANDARD	14	8.5
3227032	JOHN DEERE	30.5X32	32 X 27	INSIDE DUAL	20	16
32X27W014	JOHN DEERE	30.5X32	32 X 27	STANDARD	20	16
32X31W008-572	JOHN DEERE	35.5 X 32	32 X 31	INSIDE DUAL	14	8
32X31W027-572	JOHN DEERE	35.5 X 32	32 X 31	STANDARD	14	8
32X31W023-572	JOHN DEERE	35.5 X 32	32 X 31	STANDARD	14	10
3231008	JOHN DEERE	35.5 X 32	32 X 31	INSIDE DUAL	20	16
32X31W036	JOHN DEERE	35.5 X 32	32 X 31	STANDARD	20	14
32X31W007	JOHN DEERE	35.5 X 32	32 X 31	STANDARD	20	16
32X36W006-572	JOHN DEERE	73X44.00-32	32 X 36	STANDARD	14	8
3236012-572	JOHN DEERE	73X44.00-32	32 X 36	STANDARD	14	10
3236013	JOHN DEERE	73X44.00-32	32 X 36	STANDARD	20	16
32X44W003	JOHN DEERE	66,68,76X5000-32	32 X 44	STANDARD	14	8
3244005	JOHN DEERE	66,68,76X5000-32	32 X 44	STANDARD	20	16



### SOLVING FORESTRY MOBILITY PROBLEMS

OTR's portfolio of standard wheels and components provides a high degree of customization possibilities for end user applications. Timber harvesting is a tough business, requiring equipment that can withstand heavy loads, shock and vibration and harsh weather. Typical issues arising in regards to mobility include:

- Wheel failures due to inadequate design, light-duty construction and poor sealing interfaces that cause air leaks
- "System" not optimized, e.g. wheel design counteracts flotation requirement, resulting unstable ride and premature wear
- New tire used/desired but optimized wheel not available

Consult with your OTR salesperson for more information.



# WHEELS

## FORESTRY



### TIGERCAT WHEELS

FORESTRY

PART #	MAKE	TIRE SIZE	WHEEL SIZE	CONFIGURATION	BOLT PATTERN	BACKSPACE
2530090	TIGERCAT	67-34.00-25	25 X 30 3P	STANDARD	14	10.7
2625035	TIGERCAT	28L26	26 X 25	INSIDE DUAL	14	9.75
26X25W026-572	TIGERCAT	28L26	26 X 25	STANDARD	14	8
2625065	TIGERCAT	28L26	26 X 25	STANDARD	14	10
3221009	TIGERCAT	24.5X32	32 X 21	OUTSIDE DUAL	12	0
3227026	TIGERCAT	30.5X32	32 X 27	OUTSIDE DUAL	12	0
32X27W009	TIGERCAT	30.5X32	32 X 27	INSIDE DUAL	14	8
32X27W021	TIGERCAT	30.5X32	32 X 27	INSIDE DUAL	14	10
32X27W018	TIGERCAT	30.5X32	32 X 27	STANDARD	14	8
32X27W011	TIGERCAT	30.5X32	32 X 27	STANDARD	14	10
3227012	TIGERCAT	30.5X32	32 X 27	INSIDE DUAL	18	18
3227015	TIGERCAT	30.5X32	32 X 27	INSIDE DUAL	18	21
3227050	TIGERCAT	30.5X32	32 X 27	STANDARD	18	14
3227040	TIGERCAT	30.5X32	32 X 27	STANDARD	18	18
32X31W008	TIGERCAT	35.5 X 32	32 X 31	INSIDE DUAL	14	8
3231017	TIGERCAT	35.5 X 32	32 X 31	INSIDE DUAL	14	11.5
32X31W027	TIGERCAT	35.5 X 32	32 X 31	STANDARD	14	8
31X31W023	TIGERCAT	35.5 X 32	32 X 31	STANDARD	14	10
3231007	TIGERCAT	35.5 X 32	32 X 31	STANDARD	14	11.5
3231012	TIGERCAT	35.5 X 32	32 X 31	INSIDE DUAL	18	15
3231004	TIGERCAT	35.5 X 32	32 X 31	INSIDE DUAL	18	18
3231006	TIGERCAT	35.5 X 32	32 X 31	STANDARD	18	16
32X31W026	TIGERCAT	35.5 X 32	32 X 31	STANDARD	18	18
32X36W005	TIGERCAT	73X44.00-32	32 X 36	STANDARD	18	16
3236022	TIGERCAT	73X44.00-32	32 X 36	STANDARD	18	18
32X44W003	TIGERCAT	66,68,76X5000-32	32 X 44	STANDARD	14	8
32X44W007	TIGERCAT	66,68,76X5000-32	32 X 44	STANDARD	14	10
3244007	TIGERCAT	66,68,76X5000-32	32 X 44	STANDARD	18	18



# FORESTRY

# WHEELS

## CUSTOM ASSEMBLIES



FORESTRY

TIRE SIZE	WHEEL SIZE	CONFIGURATION	BOLT PATTERN	BACKSPACE	PART #	MAKE
67-34.00-25	25 X 30 3P	STANDARD	0	0	TBD	N/A
67-34.00-25	25 X 30 3P	INSIDE DUAL	0	0	TBD	N/A
66-43.00-25	25 X 36 3P	STANDARD	0	0	TBD	N/A
18.4X26	26 X 16	STANDARD	0	0	TBD	N/A
23.1X26	26 X 20	STANDARD	0	0	TBD	N/A
23.1X26	26 X 20	INSIDE DUAL	0	0	TBD	N/A
28L26	26 X 25	STANDARD	0	0	TBD	N/A
28L26	26 X 25	INSIDE DUAL	0	0	TBD	N/A
67/34.00-26	26 X 30	STANDARD	0	0	TBD	N/A
24.5X32	32 X 21	STANDARD	0	0	TBD	N/A
24.5X32	32 X 21	INSIDE DUAL	0	0	TBD	N/A
30.5X32	32 X 27	STANDARD	0	0	TBD	N/A
30.5X32	32 X 27	OUTSIDE DUAL	0	0	TBD	N/A
30.5X32	32 X 27	INSIDE DUAL	0	0	TBD	N/A
35.5X32	32 X 31	STANDARD	0	0	TBD	N/A
35.5X32	32 X 31	STANDARD	0	0	TBD	N/A
35.5X32	32 X 31	INSIDE DUAL	0	0	TBD	N/A
73X44.00-32	32 X 36	INSIDE DUAL	0	0	TBD	N/A
73X44.00-32	32 X 36	STANDARD	0	0	TBD	N/A
66,68,76X5000-32	32 X 44	STANDARD	0	0	TBD	N/A

Call for more information if you have these tire & wheel sizes.





# APPLICATIONS

## FORESTRY

FORESTRY



### APPLICATIONS TIPS

In looking for the right wheel, it is necessary to identify the make and model of the machine, number of bolt holes in the wheel and the backspacing required. Reference the following tables for common tire and wheel sizes and brand fits:

TIRE SIZE	WHEEL SIZE
18.4 x 26	26 x 16
23.1 x 26	26 x 20
28 L 26	26 x 25
67/34.00-26	26 x 30
24.5 x 32	32 x 21
30.5 x 32	32 x 27
35.5 x 32	32 x 31
73/44.00-32	32 x 36
67/25.00-25	25 x 30 3 PIECE

MAKE	BOLT HOLES	BACKSPACING
JOHN DEERE	14	8", 10"
JOHN DEERE	20	16"
JOHN DEERE	31	23.5", 25.6"
TIGERCAT	14	8", 10", 13.5", 15"
TIGERCAT	18	15", 18", 21"
CAT	16	8"
CAT	20	11", 15"
CAT	24	11", 15"



# FORESTRY

FORESTRY

## CONTACT INFORMATION

- For OEM inquiries contact your local OTR salesperson or send an email to sales@otrwheel.com.
- For aftermarket inquiries, contact your local OTR salesperson or call 800-833-6309 if you are located east of the Mississippi River or 888-455-4910 if you are located west of the Mississippi. You may also email us at sales@otrwheel.com.
- For information on Trans American Rubber tubes, flaps or accessories, contact us at 800-922-8823.

## WARRANTY INFORMATION

- OTR provides limited warranty coverage for tires, wheels, tracks and other items in the event of defects in workmanship. You may request a copy of our policy by emailing us sales@otrwheel.com.
- Note that OTR has designated select dealers and distributors to assist with warranty repairs. Contact OTR for more information.

## CATALOG DISCLAIMER

Product specifications and information were correct as of the date of this catalog release but are subject to change without notice or obligation. Every effort has been made to ensure the accuracy of this catalog. Consult with your salesperson if you wish to verify data is correct.

## ISO 9001: 2015 CERTIFICATION

OTR facilities are ISO 9001: 2015 registered (except for new locations where certifications are in process). ISO ensures consistent product quality, standardization, documentation and compliance with OEM requirements.

## REACH COMPLIANCE

OTR's custom tires for OEMs can be designed with REACH compliance. Consult with your salesperson as needed.



### REDUCING DOWNTIME

*"We need heavy duty wheels for heavy duty machines and OTR forestry wheels are what we put on all of our machines! The wheels interface correctly, every time, with OEM spec tires so there are no issues. The engineering that goes into their wheel shows they have the end user in mind by reducing downtime and we feel this helps bring our customers back to us when looking for new machines."*

*Justin Webb, Vice President, B&G Equipment-TigerCat Dealer*



# NOTES

## FORESTRY


# FORESTRY

# OTR

[OTRWHEEL.COM](http://OTRWHEEL.COM)

